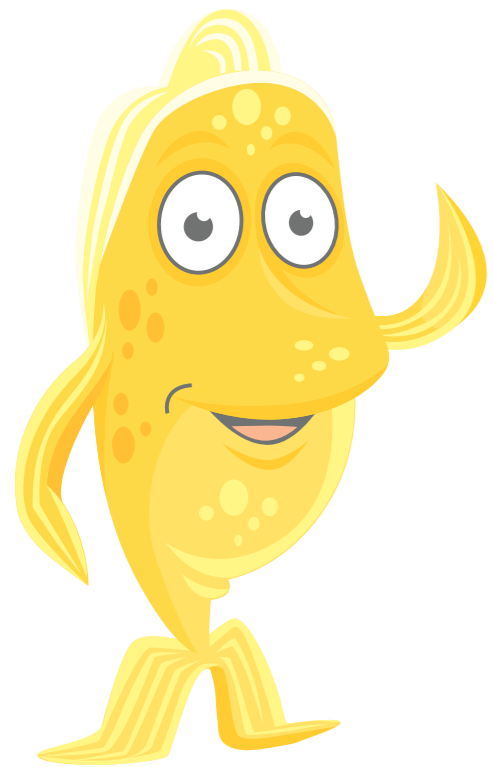


Morning starter: Face in the Crowd

Number: Fractions (including percentages)

Year 4/5/6: Solve problems involving fractions: making connections with equivalents and percentages and calculating fractions of amounts.



for more starters visit doodlemaths.com/starters



- 1) How many faces are wearing glasses? What fraction of the faces are wearing glasses?
- 2) How many of the crowd have brown hair? What fraction of the crowd is this? Can you simplify this fraction?
- 3) What fraction of the crowd are wearing hats? What percentage would this be?

- 4) What fraction of the crowd are clearly wearing blue shirts? What percentage of the crowd is this?
- 5) What fraction of the crowd are female? Can you write three equivalent fractions to this? What percentage of the crowd are female?
- 6) 5% of the crowd are wearing black T-Shirts. Is this statement correct? How can you show this?

- 7) Is the number of people wearing necklaces in the crowd equivalent to: $\frac{6}{40}$, 20% or neither? "

Explore some more...by writing similar questions to share.